

# ANTIQUE STONES



**CERIM**

MADE IN FLORIM

the 1990s, the number of people in the UK who are employed in the public sector has increased from 10.5 million to 12.5 million, and the number of people in the public sector who are employed in health care has increased from 1.5 million to 2.5 million (Department of Health 2000).

There are a number of reasons for the increase in the number of people employed in the public sector. One reason is that the public sector has become a major employer in the UK. Another reason is that the public sector has become a major employer in the health care sector. A third reason is that the public sector has become a major employer in the social care sector.

The increase in the number of people employed in the public sector has led to a number of changes in the way that the public sector is organized. One change is that the public sector has become more decentralized. Another change is that the public sector has become more market-oriented. A third change is that the public sector has become more customer-oriented.

The changes in the way that the public sector is organized have led to a number of challenges for the public sector. One challenge is that the public sector has become more complex. Another challenge is that the public sector has become more competitive. A third challenge is that the public sector has become more demanding.

The challenges that the public sector faces are a result of the changes in the way that the public sector is organized. The challenges that the public sector faces are a result of the changes in the way that the public sector is organized. The challenges that the public sector faces are a result of the changes in the way that the public sector is organized.

The challenges that the public sector faces are a result of the changes in the way that the public sector is organized. The challenges that the public sector faces are a result of the changes in the way that the public sector is organized. The challenges that the public sector faces are a result of the changes in the way that the public sector is organized.

The challenges that the public sector faces are a result of the changes in the way that the public sector is organized. The challenges that the public sector faces are a result of the changes in the way that the public sector is organized. The challenges that the public sector faces are a result of the changes in the way that the public sector is organized.

The challenges that the public sector faces are a result of the changes in the way that the public sector is organized. The challenges that the public sector faces are a result of the changes in the way that the public sector is organized. The challenges that the public sector faces are a result of the changes in the way that the public sector is organized.

# ANTIQUE STONES

**CERIM**

MADE IN FLORIM

LA MATERIA DIVENTA STRUMENTO  
PER REALIZZARE UNA PERFETTA  
ARMONIA CROMATICA.

LE MOLTEPLICI GRAFICHE SI  
INTRECCIANO CREANDO UN'  
ATMOSFERA CALDA E NATURALE CHE  
IMMEDIATAMENTE RIMANDA AD UNA  
SENSAZIONE LEGGERA E MODERNA  
DI UNO SPAZIO CREATO SU MISURA  
COME UN ABITO.

ANTIQUE STONES, NELLE SUE 5  
TONALITÀ DI COLORE, DONA UN  
NUOVO SIGNIFICATO AD UNA  
SUPERFICIE SOFISTICATA  
RENDENDOLA LUMINOSA E  
NATURALE.

THE MATERIAL BECOMES A TOOL FOR PRODUCING A PERFECT HARMONY OF COLOUR. THE MULTIPLE GRAPHIC DESIGNS INTERTWINE, CREATING A WARM, NATURAL ATMOSPHERE THAT IMMEDIATELY EVOKES A LIGHTWEIGHT, MODERN SENSATION OF SPACE THAT IS MADE TO MEASURE LIKE A GARMENT. ANTIQUE STONES, IN THE 5 COLOURWAYS, GIVE NEW MEANING TO A SOPHISTICATED SURFACE, MAKING IT BRIGHT AND NATURAL.

LA MATIÈRE DEVIENT L'OUTIL PERMETTANT D'ATTEINDRE UNE PARFAITE HARMONIE CHROMATIQUE. LES MULTIPLES GRAPHISMES ENTREMÊLÉS CRÉENT UNE ATMOSPHÈRE CHAUDE ET NATURELLE QUI RENVOIE INSTANTANÉMENT À LA SENSATION LÉGÈRE ET MODERNE PROPRE À UN ESPACE CRÉÉ SUR MESURE, TEL UN VÊTEMENT. AVEC SES 5 TONALITÉS, ANTIQUE STONES DONNE UN SENS NOUVEAU À UNE SURFACE SOPHISTIQUEE, LUI CONFÉRANT LUMIÈRE ET NATUREL.

AUS DER MATERIE WIRD EIN INSTRUMENT ZUR SCHAFFUNG EINER PERFEKTEN FARBHARMONIE. DIE VIELFÄLTIGEN FORMATE VERFLECHTEN SICH GRAFISCH MITEINANDER UND LASSEN EINE WARME UND NATÜRLICHE ATMOSPHÄRE ENTSTEHEN, DIE DAS LEICHTE UND MODERNE GEFÜHL EINES RAUMS VERMITTELT, DER WIE EIN KLEIDUNGSSTÜCK NACH MAß GEFERTIGT WURDE. ANTIQUE STONES VERLEIHT DURCH DIE LEUCHTKRAFT UND NATÜRLICHKEIT SEINER 5 FARBTONALITÄTEN ELEGANTEN OBERFLÄCHEN EINE NEUE DIMENSION.

LA MATERIA PRIMA SE CONVIERTE EN UN INSTRUMENTO QUE PERMITE OBTENER UNA PERFECTA ARMONÍA CROMÁTICA. LOS MÚLTIPLES GRÁFICOS SE ENTRECRUZAN PARA CREAR UNA ATMÓSFERA CÁLIDA Y NATURAL, LA CUAL PROPORCIONA UNA INMEDIATA SENSACIÓN DE LIGEREZA Y MODERNIDAD A UN ESPACIO CREADO A LA MEDIDA, COMO UN VESTIDO. ANTIQUE STONES, CON SUS 5 TONALIDADES DE COLORES, CAMBIA EL SIGNIFICADO DE UNA SUPERFICIE SOFISTICADA, QUE ADQUIERE LUMINOSIDAD Y NATURALIDAD.

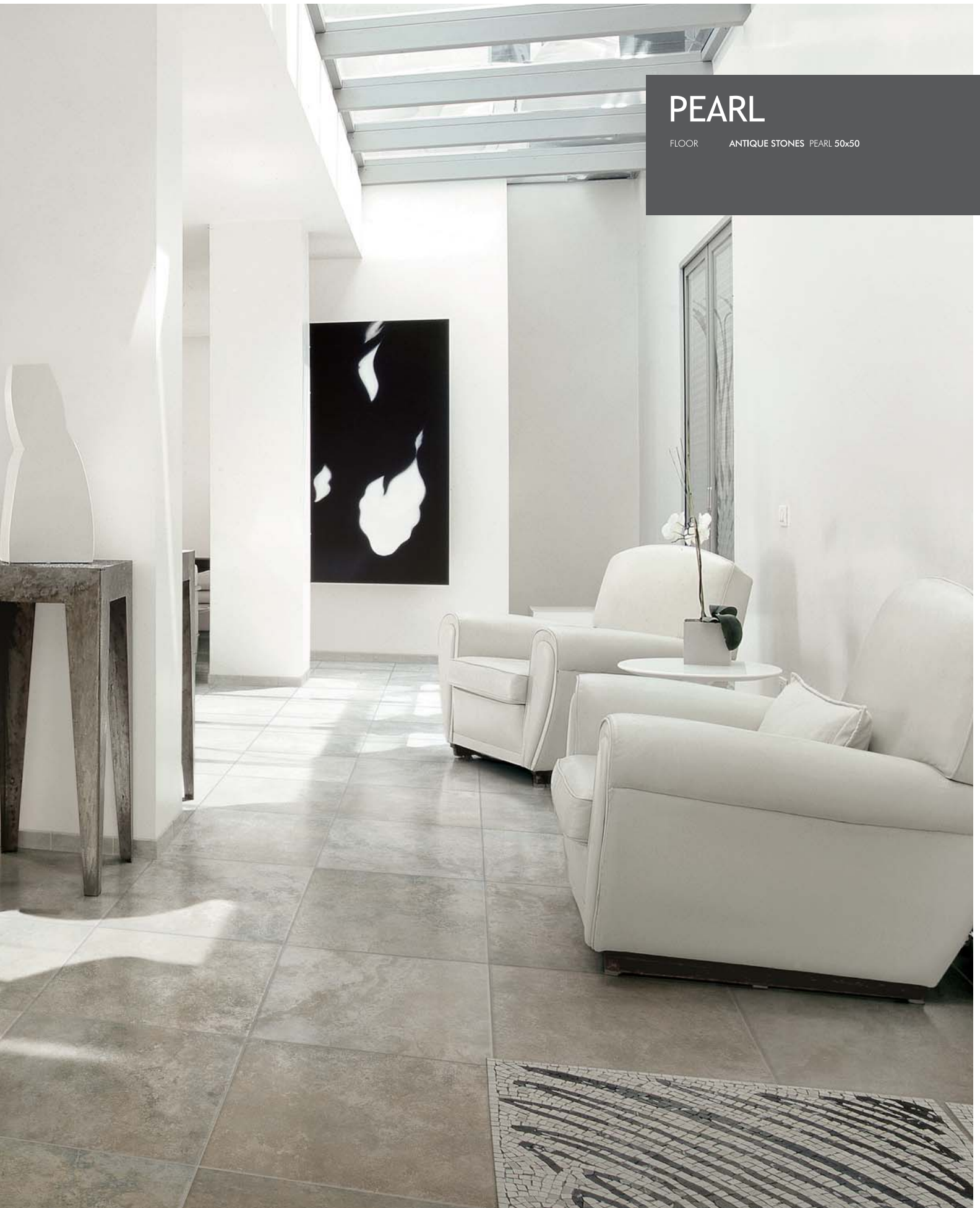
Материал превращается в инструмент воплощения безукоризненной цветовой гармонии. Переплетение бесчисленных графических рисунков создает теплую и естественную атмосферу, мгновенно погружаясь в интерьер, как в сшитую на заказ одежду, даря ощущение легкого и современного дизайна. Серия Antique stones, впитав из природы светлые и естественные цвета, дарит новое значение изысканной поверхности, воплощенной палитрой из 5-ти цветовых оттенков.





# PEARL

FLOOR ANTIQUE STONES PEARL 50x50









# PEARL

FLOOR ANTIQUE STONES PEARL 50x50









# IRON

FLOOR ANTIQUE STONES IRON 50x50









# CHALK

WALL      ANTIQUE STONES CHALK 33x66,4  
            ANTIQUÉ STONES CHALK MOSAICO RE 33,3x33,3  
            ANTIQUÉ STONES CHALK TOR 4x33,3

FLOOR     ANTIQUÉ STONES CHALK 33,3x33,3







# CHALK

WALL    ANTIQUE STONES CHALK 33x66,4  
         ANTIQUE STONES CHALK MOSAICO RE 33,3x33,3  
         ANTIQUE STONES CHALK TOR 4x33,3

FLOOR    ANTIQUE STONES CHALK 33,3x33,3









# NUT

FLOOR ANTIQUE STONES NUT 33x66,4







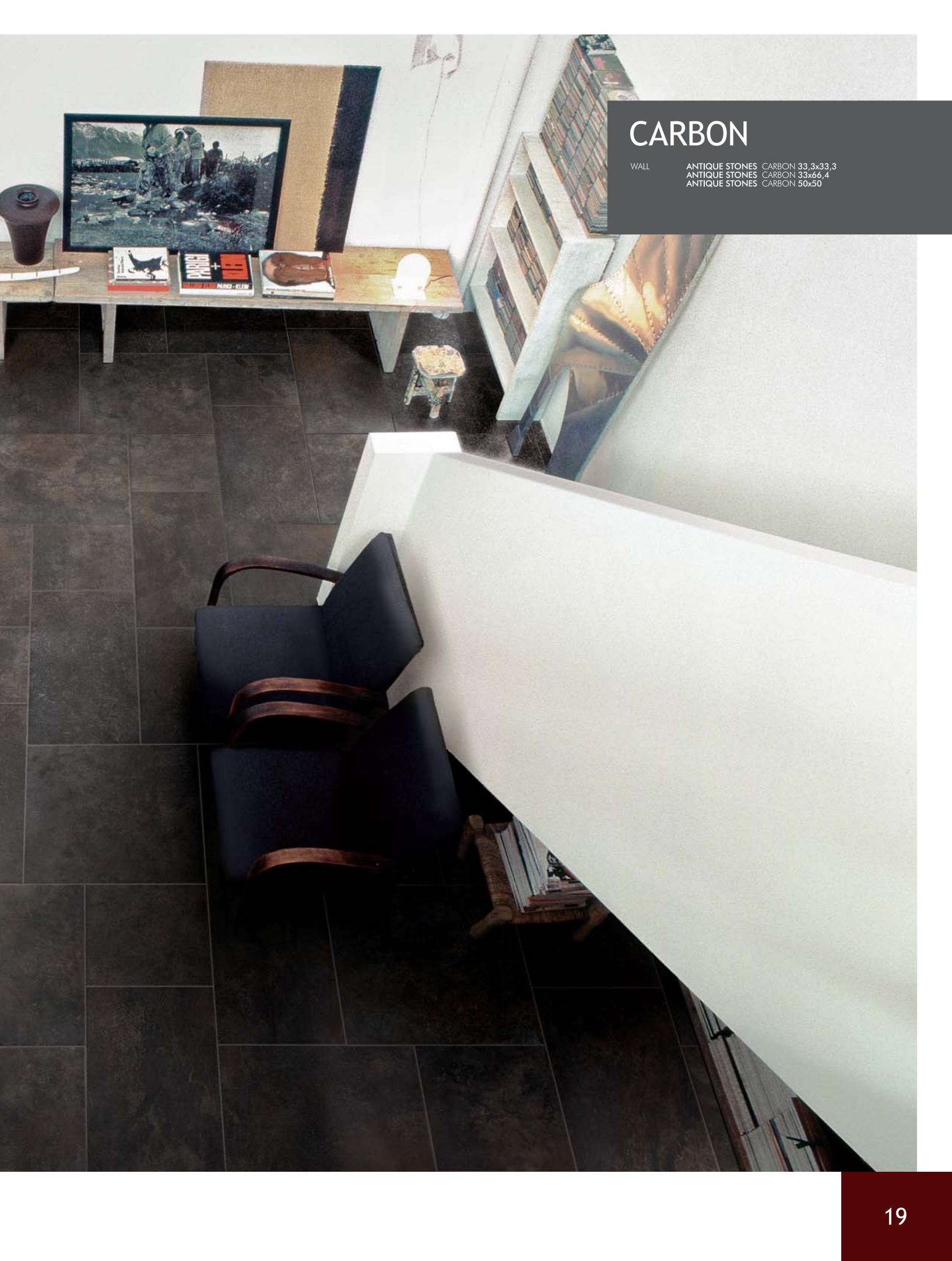
# NUT

FLOOR ANTIQUE STONES NUT 33x66,4



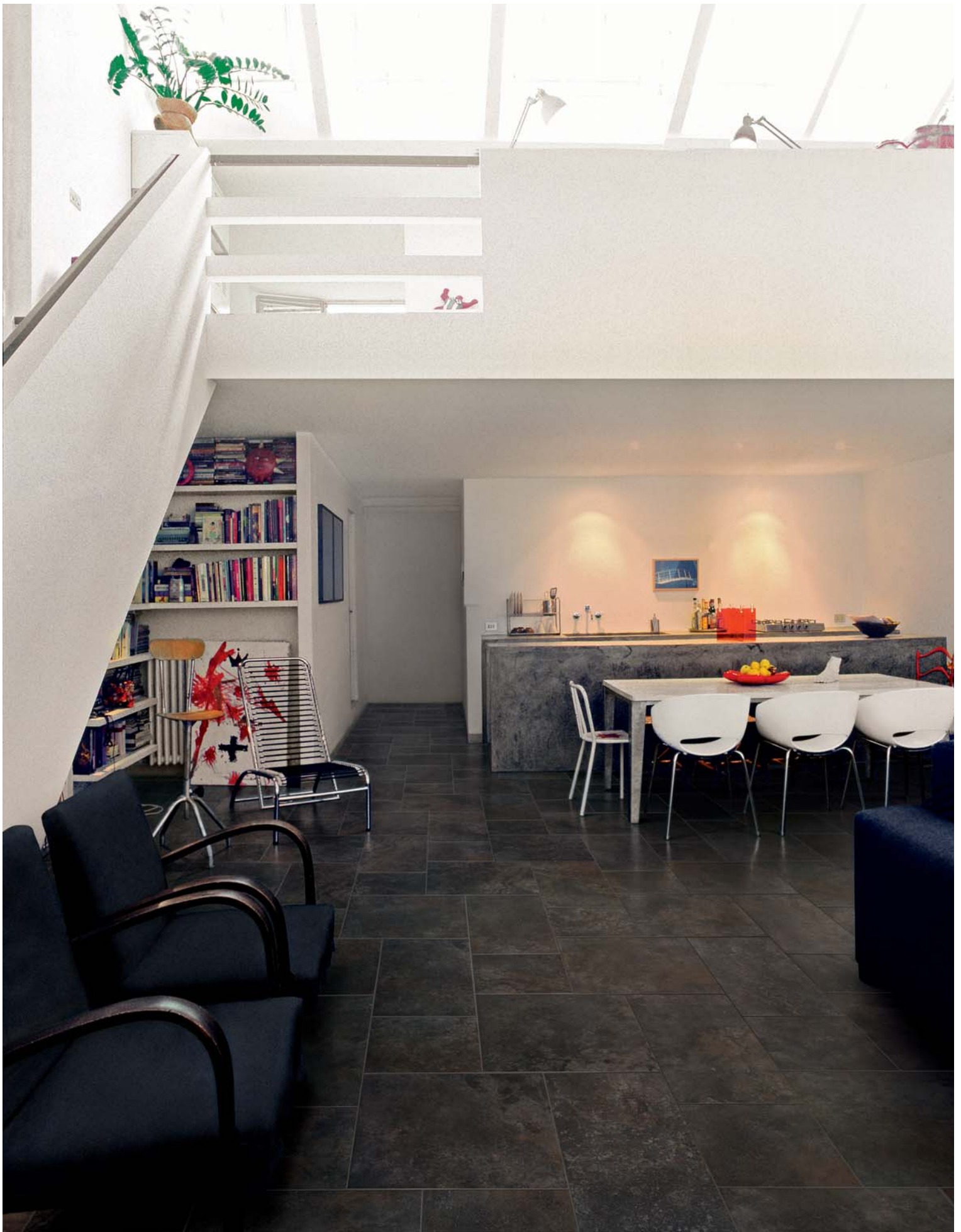






# CARBON

WALL  
ANTIQUE STONES CARBON 33,3x33,3  
ANTIQUE STONES CARBON 33x66,4  
ANTIQUE STONES CARBON 50x50







# CARBON

WALL

ANTIQUE STONES CARBON 33,3x33,3  
ANTIQUE STONES CARBON 33x66,4  
ANTIQUE STONES CARBON 50x50







# Gres porcellanato smaltato

Glazed porcelain stoneware / Gres cérame émaillé / Glasierte Feinsteinzeug  
Gres porcelánico esmaltado / Глазурованный керамогранит



Pavimento / Floor / Sol / Bodenfliese / Pavimento / Напольная

## CHALK



CHALK 734388  
50x50 (19<sup>5/8</sup>"x19<sup>5/8</sup>")



CHALK 734541  
33x66,4 (13"x26")



CHALK 734392  
33,3x33,3 (13"x13")



CHALK MOSAICO-RE 734469  
5x5 (2"x2")  
33,3x33,3 (13"x13")

### Pezzi speciali / Special trims / Pièces spéciales / Formstücke / Piezas especiales / Специальные изделия

TORELLO  
4x33,3 (1<sup>1/2</sup>"x13")



CHALK 734473

TORELLO ANG COMP/2  
4x33,3 (1<sup>1/2</sup>"x13")

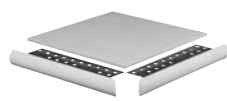


CHALK 734477

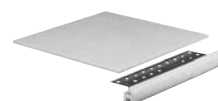
BATTISCOPA  
8x33,3 (3<sup>1/8</sup>"x13")



CHALK 734465



GRIGLIA POSA TOR 38762



Indicazioni per il montaggio (gradino o piano lavoro).  
Assembly instructions (step or worktable).  
Conseils pour la pose (marche ou plan de travail).  
Anleitungen für die Montage (Stufe oder Arbeitsflächen).  
Indicaciones para el montaje (escalón o plan trabajo).  
Указания по монтажу (ступень или столешница).







# Gres porcellanato smaltato

Glazed porcelain stoneware / Gres cérame émaillé / Glasierte Feinsteinzeug  
Gres porcelánico esmaltado / Глазурованный керамогранит



Pavimento / Floor / Sol / Bodenfliese / Pavimento / Напольная

## PEARL



PEARL 734387  
50x50 (19<sup>5/8</sup>"x19<sup>5/8</sup>"



PEARL 734540  
33x66,4 (13"x26")



PEARL 734391  
33,3x33,3 (13"x13")



PEARL MOSAICO-RE 734468  
5x5 (2"x2")  
33,3x33,3 (13"x13")

Pezzi speciali / Special trims / Pièces spéciales / Formstücke / Piezas especiales / Специальные изделия

TORELLO  
4x33,3 (1<sup>1/2</sup>"x13")



PEARL 734472

TORELLO ANG COMP/2  
4x33,3 (1<sup>1/2</sup>"x13")

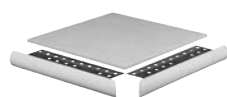


PEARL 734476

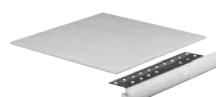
BATTISCOPA  
8x33,3 (3<sup>1/8</sup>"x13")



PEARL 734464

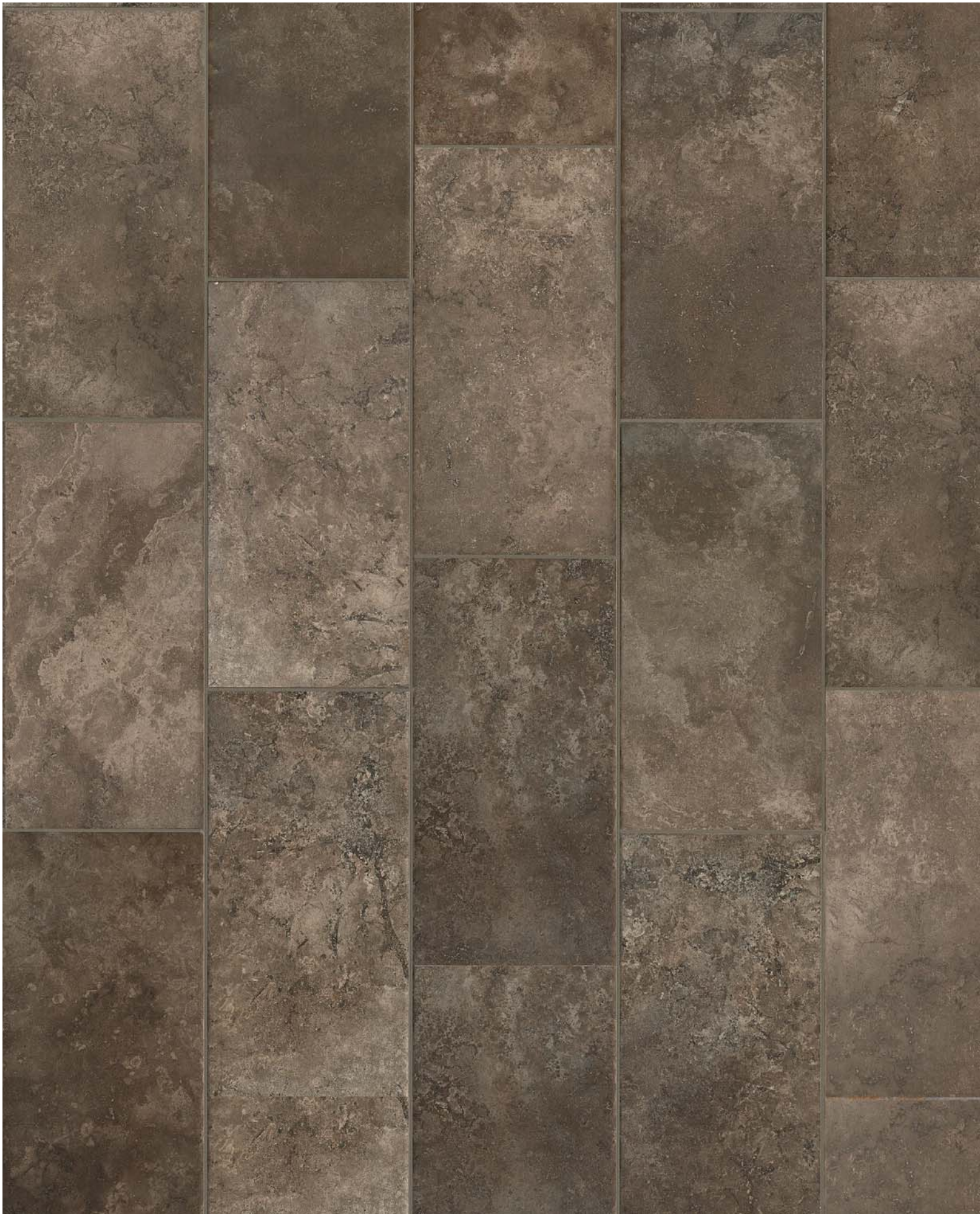


GRIGLIA POSA TOR 38762



Indicazioni per il montaggio (gradino o piano lavoro).  
Assembly instructions (step or worktable).  
Conseils pour la pose (marche ou plan de travail).  
Anleitungen für die Montage (Stufe oder Arbeitsflächen).  
Indicaciones para el montaje (escalón o plan trabajo).  
Указания по монтажу (ступень или столешница).







# Gres porcellanato smaltato

Glazed porcelain stoneware / Gres cérame émaillé / Glasierte Feinsteinzeug  
Gres porcelánico esmaltado / Глазурованный керамогранит



Pavimento / Floor / Sol / Bodenfliese / Pavimento / Напольная

## NUT



NUT 734389  
50x50 (19<sup>5/8</sup>"x19<sup>5/8</sup>")



NUT 734542  
33x66,4 (13"x26")



NUT 734393  
33,3x33,3 (13"x13")



NUT MOSAICO-RE 734470  
5x5 (2"x2")  
33,3x33,3 (13"x13")

### Pezzi speciali / Special trims / Pièces spéciales / Formstücke / Piezas especiales / Специальные изделия

TORELLO  
4x33,3 (1<sup>1/2</sup>"x13")



NUT 734474

TORELLO ANG COMP/2  
4x33,3 (1<sup>1/2</sup>"x13")

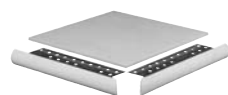


NUT 734478

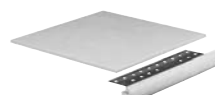
BATTISCOPA  
8x33,3 (3<sup>1/8</sup>"x13")



NUT 734466



GRIGLIA POSA TOR 38762



Indicazioni per il montaggio (gradino o piano lavoro).  
Assembly instructions (step or worktable).  
Conseils pour la pose (marche ou plan de travail).  
Anleitungen für die Montage (Stufe oder Arbeitsflächen).  
Indicaciones para el montaje (escalón o plan trabajo).  
Указания по монтажу (ступень или столешница).







# Gres porcellanato smaltato

Glazed porcelain stoneware / Gres cérame émaillé / Glasierte Feinsteinzeug  
Gres porcelánico esmaltado / Глазурованный керамогранит



Pavimento / Floor / Sol / Bodenfliese / Pavimento / Напольная

## IRON



IRON 734386  
50x50 (19<sup>5/8</sup>"x19<sup>5/8</sup>"



IRON 734539  
33x66,4 (13"x26"



IRON 734390  
33,3x33,3 (13"x13"



IRON MOSAICO-RE 734467  
5x5 (2"x2")  
33,3x33,3 (13"x13"

Pezzi speciali / Special trims / Pièces spéciales / Formstücke / Piezas especiales / Специальные изделия

TORELLO  
4x33,3 (1<sup>1/2</sup>"x13"



IRON 734471

TORELLO ANG COMP/2  
4x33,3 (1<sup>1/2</sup>"x13"

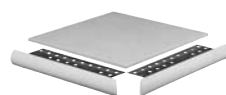


IRON 734475

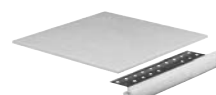
BATTISCOPA  
8x33,3 (3<sup>1/8</sup>"x13"



IRON 734462

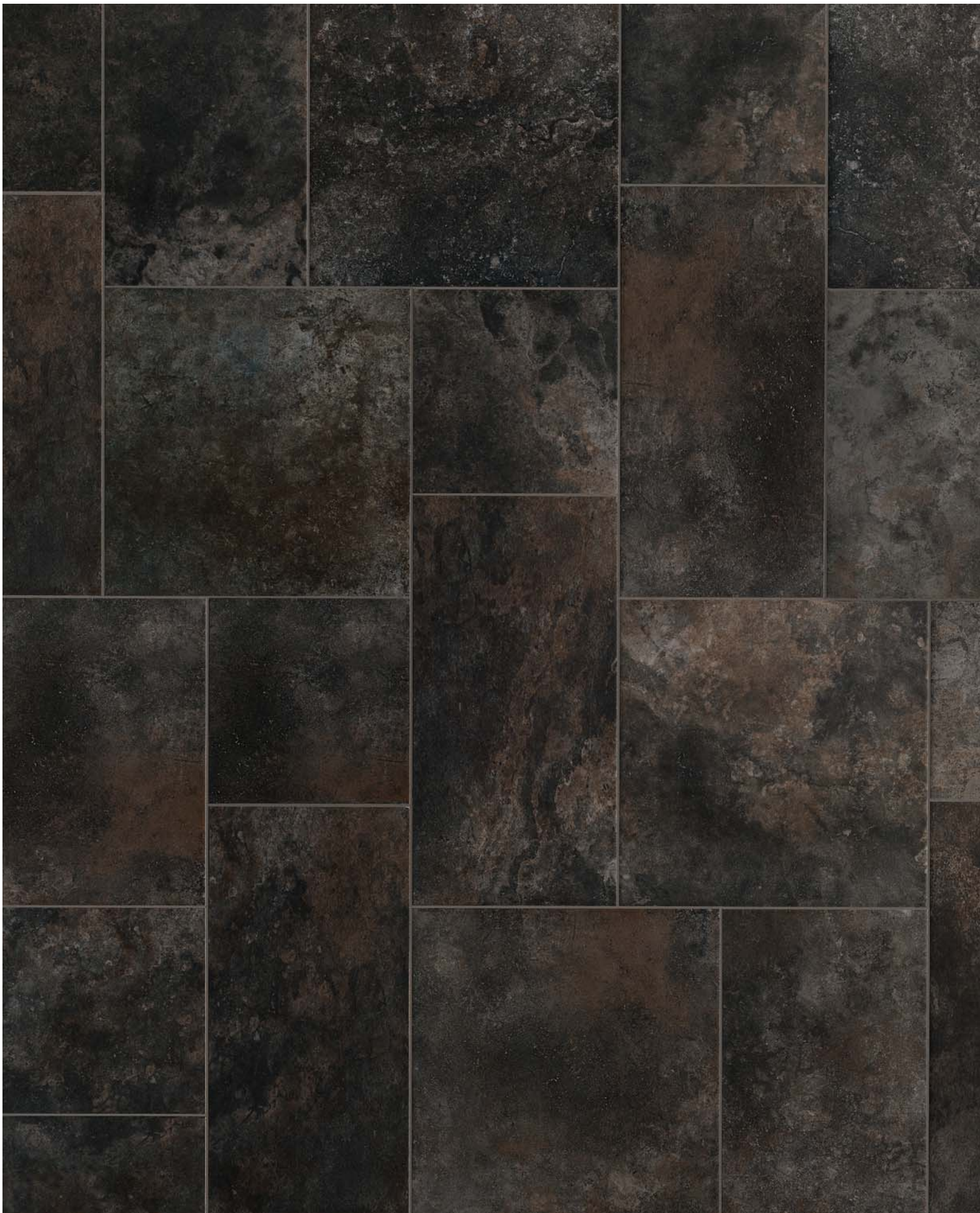


GRIGLIA POSA TOR 38762



Indicazioni per il montaggio (gradino o piano lavoro).  
Assembly instructions (step or worktable).  
Conseils pour la pose (marche ou plan de travail).  
Anleitungen für die Montage (Stufe oder Arbeitsflächen).  
Indicaciones para el montaje (escalón o plan trabajo).  
Указания по монтажу (ступень или столешница).







# Gres porcellanato smaltato

Glazed porcelain stoneware / Gres cérame émaillé / Glasierte Feinsteinzeug  
Gres porcelánico esmaltado / Глазурованный керамогранит



Pavimento / Floor / Sol / Bodenfliese / Pavimento / Напольная

## CARBON



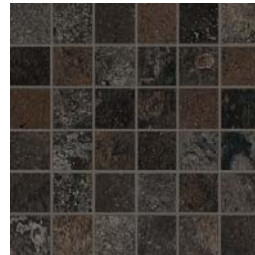
CARBON 734383  
50x50 (19<sup>5/8</sup>"x19<sup>5/8</sup>")



CARBON 734538  
33x66,4 (13"x26")



CARBON 734384  
33,3x33,3 (13"x13")



CARBON MOSAICO-RE 734423  
5x5 (2"x2")  
33,3x33,3 (13"x13")

### Pezzi speciali / Special trims / Pièces spéciales / Formstücke / Piezas especiales / Специальные изделия

TORELLO  
4x33,3 (1<sup>1/2</sup>"x13")



CARBON 734424

TORELLO ANG COMP/2  
4x33,3 (1<sup>1/2</sup>"x13")

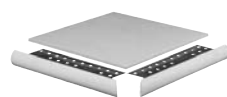


CARBON 734425

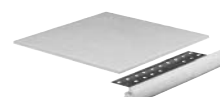
BATTISCOPIA  
8x33,3 (3<sup>1/8</sup>"x13")



CARBON 734422



GRIGLIA POSA TOR 38762



Indicazioni per il montaggio (gradino o piano lavoro).  
Assembly instructions (step or worktable).  
Conseils pour la pose (marche ou plan de travail).  
Anleitungen für die Montage (Stufe oder Arbeitsflächen).  
Indicaciones para el montaje (escalón o plan trabajo).  
Указания по монтажу (ступень или столешница).



Per informazioni relative ai dati tecnici su marcatura CE vedere il sito [www.cerim.it](http://www.cerim.it)  
 Please refer to our web site [www.cerim.it](http://www.cerim.it) for technical information related to CE labelling  
 Pour tout renseignement sur l'avis technique de la marque CE veuillez consulter le site [www.cerim.it](http://www.cerim.it)  
 Informationen bezüglich technischer Daten zur Beschriftung CE entnehmen Sie unserer Website [www.cerim.it](http://www.cerim.it)  
 Para informaciones relativas a las especificaciones técnicas sobre la marca CE, chequear el sitio [www.cerim.it](http://www.cerim.it)  
 Информация по т.ч.х. данным, относящимся к маркировке "СБ" принимать на сайте [www.cerim.it](http://www.cerim.it)



GRADO DI VARIAZIONE CROMATICA - DEGREE OF COLOUR CHANGE - DEGRE DE VARIATION CHROMATIQUE - GRAD DER FARBABWEICHUNG - GRADO DE VARIACIÓN CROMÁTICA - СТЕПЕНЬ ХРОМАТИЧЕСКОГО ИЗМЕНЕНИЯ

<p><b>LOW</b> V1</p> <p>THE LEAST AMOUNT OF SHADE AND TEXTURE VARIATION ATTAINABLE IN NATURALLY FIRED CLAY PRODUCTS.</p> <p>Prodotto Monocromatico          Produit Monochromatique          Einfarbiges Produkt          Producto Monocromático          Одноцветная продукция</p>	<p><b>MODERATE</b> V2</p> <p>LIGHT TO MODERATE SHADE AND TEXTURE VARIATION WITHIN EACH CARTON.</p> <p>Prodotto con leggera variazione cromatica          Produit à légère variation chromatique          Produkt mit leichter Farbnuance          Producto con una pequeña variación cromática          продукция с легкими цветовыми изменениями</p>	<p><b>HIGH</b> V3</p> <p>HIGH SHADE AND TEXTURE VARIATION WITHIN EACH CARTON.</p> <p>Prodotto con marcata variazione cromatica          Produit à variation chromatique accentuée          Produkt mit ausgeprägter Farbnuance          Producto con evidente variación cromática          продукция с яркими цветовыми изменениями</p>	<p><b>RANDOM</b> V4</p> <p>VERY HIGH SHADE AND TEXTURE VARIATION WITHIN EACH CARTON.</p> <p>Prodotto con forte variazione cromatica          Produit à forte variation chromatique          Produkt mit starker Farbnuance          Producto con fuerte variación cromática          продукция с сильными цветовыми изменениями</p>
---	---	---	---



# ANTIQUE STONES

© by Cerim 05/2014 cod. 822558



MADE IN FLORIM

**FLORIM CERAMICHE S.p.A.**  
Uffici Commerciali: Via Canaletto, 24 - 41042 Fiorano Modenese (MO) Italy  
Tel. 0536.840.911 - Fax 0536.844.072 - [www.cerim.it](http://www.cerim.it)

